

A Rugged and Mobile Solution

Container Spray Paint Booth

Engineered Performance

The Container spray paint booth is a conversion using an ISO standard shipping container, turning it into a professional quality spray booth, with all of the standard functions, options and safety features that you expect, and that your spray operations require.

A container spray booth can be configured as an "Open Face" booth or as a "Front Air Flow" booth where the front doors have filters that remove dust and particulates from the air before it enters the spray booth.

It's easy to move, easy to operate, and easy to maintain.



Non Heated Container Spray Paint Booth



Heated Container
Spray Paint Booth

Great Finishes Start Here!



Marathon Spray Paint Booths
are ETL Listed for Your Safety!

Made to Last, Built to RUN!

Container Spray Booths Features & Components



Intake Filters

Quality Intake filter media is one of the key components in maintaining a "clean room" type of environment that is dust free. We provide high quality filter media with dust lock technology for a dust free finish every time.



Fans/Motors

Our fans and motors are US made, and AMCA certified, with spark resistant aluminum blades, hi efficiency motors, and belt driven tube axial fans. The streamlined belt tunnel ventilates the drive compartment with air from outside the fan housing.



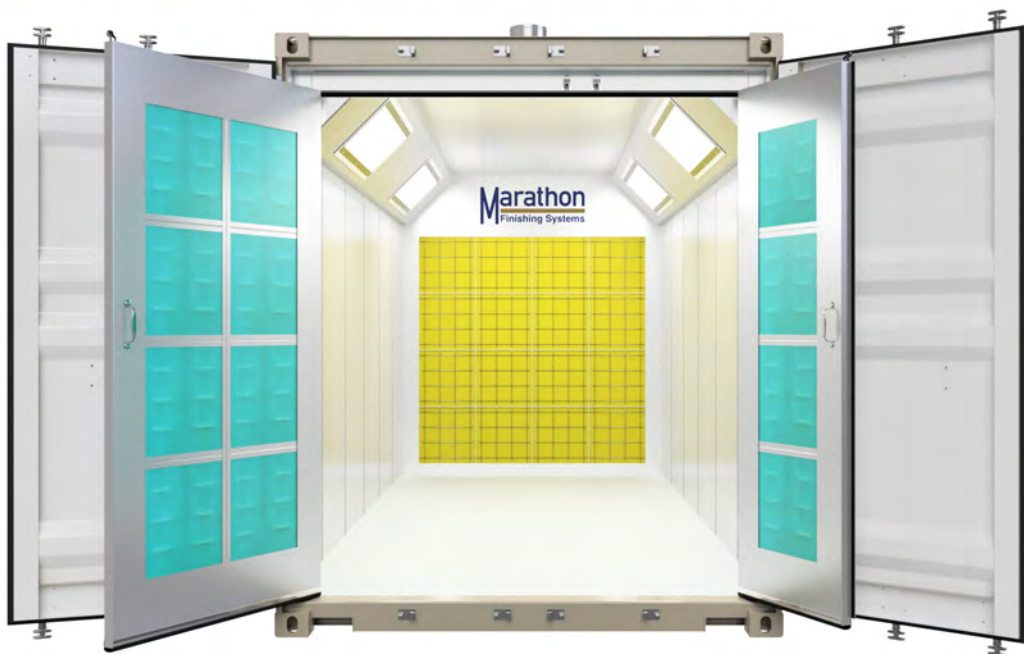
Exhaust Filters

Our spray booths use only "Industry Standard" sized filters. Easily replaceable from any filter supplier, online, or from Marathon directly. Marathon "Standard Series" booths come with 20" x 20" x 2" hi-efficiency fiberglass paint arrester pads included with purchase.



Lighting

Marathon takes great care when determining all aspects of illumination (location, orientation, etc.) for all of our spray booths, so you get the best lighting possible in your work space. We provide UL listed LED fixtures with a full one year warranty.



Non Heated Container Spray Paint Booth



Doors

Our large main doors are designed for easy access into the container spray booth. It has a larger door with a smaller 3 ft wide door. This acts as an MAN access door when the other larger door is closed.



Construction

The inside of our container booths are made using 18 gauge galvanized steel, making the inner walls smooth. The **ONLY ETL Listed** shipping container based spray paint booth available ANYWHERE!

Call Us Today at **310 791-5601**
for a Quote & More Information



Did You Know?

The **ETL Listing** (certification) is confirmation that every aspect of our construction meets or exceeds the build and safety code standards established by NFPA 33. This is important, as your Fire Inspector will require proof of compliance before approval.

Made to Exceed Your Expectations

All of Marathon Finishing's Container spray booths are manufactured using a standard ISO shipping container.

We build them out using quality components and expert craftsmanship that is focused on meeting or exceeding NFPA and OSHA safety requirements.

All of our LED light fixtures are UL listed for use in their respective applications. They have been properly distributed throughout the work environment to provide optimal lighting, minimize shadow casting, and create a well lit & safe work environment.

All of our container spray paint booths are designed to provide a superior experience with simple operation and easy maintenance, using components that are easily sourced and easy to replace.

Our container spray booths can be easily moved: Just put it on a truck, and you're off to the next location!

Marathon Finishing will design, build, and install your container spray booth to your exact specifications, to fit your needs, and your available space.

Custom does not mean more expensive. All of our paint booths are manufactured at our facility in Temecula, CA. They are equipped with components from trusted US manufacturers that deliver performance, quality, and safety.

Every day.

Call Us Today at **310 791-5601**
for a Quote & More Information

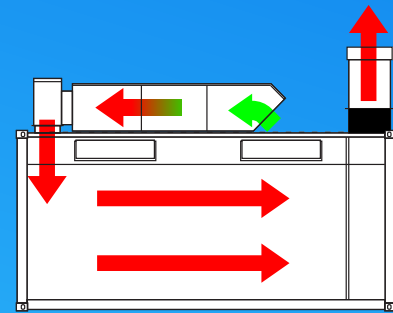
Marathon Spray Paint Booths
are ETL Listed for Your Safety!



Container Spray Paint Booth Air Flow

Intake, Heated Booth:

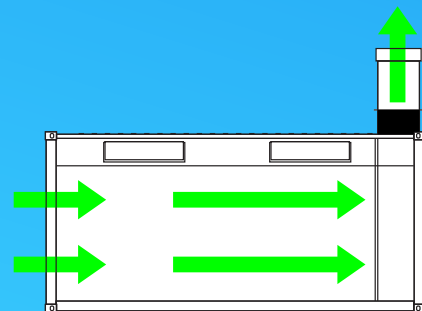
Outside air is filtered twice, once as it enters in through the air make up unit located on top of the container booth, and again as it passes through the intake plenum filters (above the front doors). In this example this booth is equipped with a Spray & Cure heating unit, also known as 'Make Up Air'.



Heated

Intake, Non Heated Booth:

Outside air is filtered once, through the front intake filter wall (front doors) before entering the work area.



Non Heated

Exhaust, Both Spray Booth Types:

The filtered air travels horizontally across the length of the booth (cross flow). Finally, the air is filtered of overspray and particulates by the exhaust filters before exiting the booth. Marathon uses standard size Intake and exhaust filter media, readily available from most paint and refinishing suppliers or directly from Marathon Finishing Systems.

Engineered to a Higher Standard

Mobile Container Spray Paint Booths - Marathon Finishing Systems



Call Us Today at **310 791-5601** for a Quote & More Information

Great Finishes Start Here!

©2024 Marathon Finishing Systems, Inc. • www.MarathonSprayBooths.com • 310-791-5601 • info@MarathonSprayBooths.com

Marathon
Finishing Systems

Available Options & Upgrades



LED Lighting Fixtures

We offer many different styles and types of lighting fixtures to choose from for your paint booth.



Additional Filters

Don't get caught off guard! Make sure you have enough filters on hand by ordering extra filters.



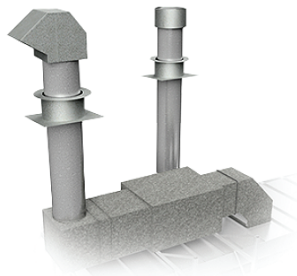
Paint Mixing Rooms

Don't forget a paint mixing room. An important addition to your painting operation.



Booth Coat

You've invested a lot of money on your spray paint booth, so you should protect it. Clear or White.



Ducting Options

Whether it's a short run, or an entire facility air flow system, we have what you need.

Call 310 791-5601 for Additional Information About These Options

Marathon
Finishing Systems