

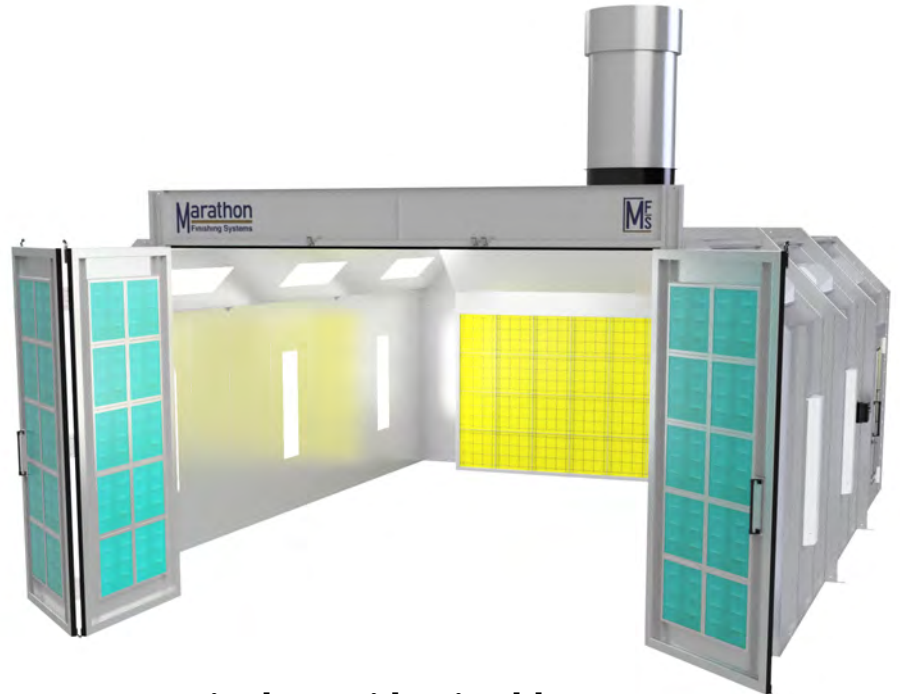
Benchmark Performance & Service

Front Air Flow Spray Paint Booths

The simple design of this spray paint booth makes it inexpensive, easy to operate, and easy to maintain. The Front Air Flow paint booth is very popular with coating professionals in virtually every industry.

We offer many standard sizes and custom configurations to fit your exact needs, and your specific facility.

Take a look and see if this spray booth is everything we say it is, everything you need, and more!



Front Air Flow with Tri-Fold Doors



**Front Air Flow
with Dual Doors**

Great Finishes Start Here!



Marathon Spray Paint Booths
are ETL Listed for Your Safety!

Made to Last, Built to RUN!

Front Air Flow Features & Components



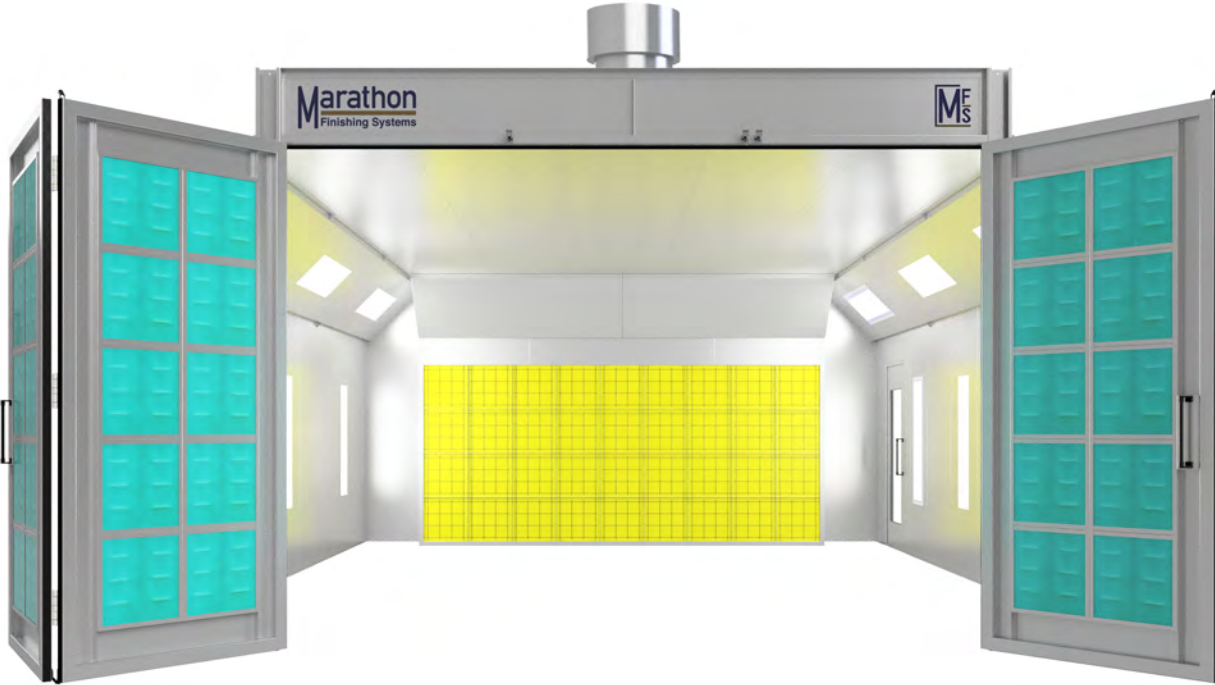
Intake Filters

Quality Intake filter media is one of the critical components in maintaining a "clean room" type of dust free environment. Marathon Finishing provides high quality filter media with dust lock technology for a dust free finish every time.



Fans/Motors

Our fans and motors are US made and AMCA certified, with spark resistant aluminum fan blades, high efficiency motors, and belt driven tubeaxial fans. The streamlined belt tunnel ventilates the drive compartment with air from outside the fan housing.



Doors

Our large main doors are all single skin construction, which reduces weight. This minimizes long term issues of maintenance that may arise. Our smaller (3ft x 7ft) personnel doors are dual skin, but do not experience problems due to weight.



Exhaust Filters

Our spray booths use only "Industry Standard" sized filters. Easily replaceable from any filter supplier, online, or from Marathon directly. Marathon provides high efficiency fiberglass paint arrestor pads included with purchase.



Construction

All of our paint booths are made using 18 gauge galvanized steel precision pre punched on center every 6" on 2" companion flanges. All of our spray paint booths are **ETL Listed** to ensure we build to the highest and SAFEST quality standards!



Lighting

Marathon takes great care when determining all aspects of illumination (location, orientation, etc.) for all of our spray booths, so you get the best lighting possible in your work space, with UL listed LED fixtures and one year warranty.

Call Us Today at **310 791-5601**
for a Quote & More Information



Did You Know?

The **ETL Listing** (certification) is confirmation that every aspect of our construction meets or exceeds the build and safety code standards established by NFPA 33. This is important, as your Fire Inspector will require proof of compliance before approval.

Made to Exceed Your Expectations

All of Marathon's spray paint booths are manufactured using 18 gauge galvanized steel panels and precision cut using CNC equipment.

Our booths are assembled using nut & bolt construction with precision CNC punched holes every 6" on center of 2" companion flanges, resulting in a rugged structure that is built to meet or exceed NFPA and OSHA safety code requirements.

All of our LED light fixtures are UL listed for use in their respective applications. Lights been properly distributed throughout the work environment to provide optimal lighting, minimize shadow casting, and create a well lit & safe work environment.

All of our spray paint booths are designed to provide a superior experience with simple operation and easy maintenance, using components that are easily sourced and easy to replace.

Marathon Finishing will design, build, and install your spray paint booth to your exact specifications, to fit your needs, and your available space. Custom does not mean more expensive. All of our paint booths are manufactured at our facility in Temecula, CA. We only use components from trusted US manufacturers that deliver performance, quality, and safety.

Every day.

Call Us Today at **310 791-5601**
for a Quote & More Information

Marathon Spray Paint Booths
are ETL Listed for Your Safety!



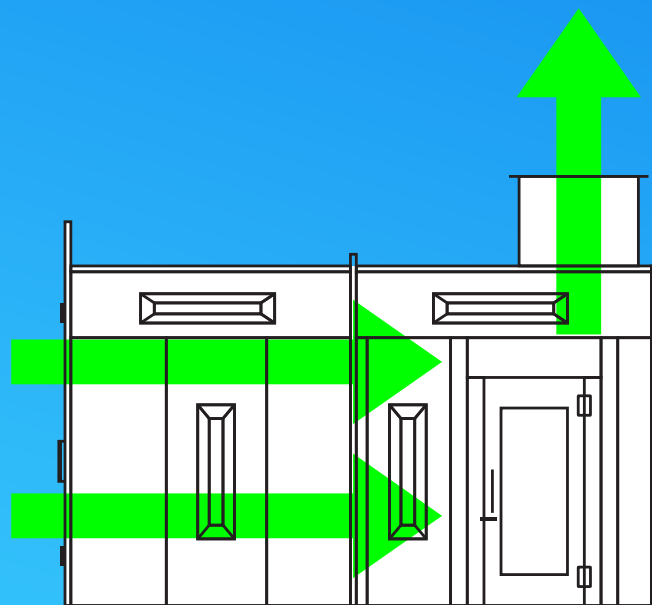
Marathon
Finishing Systems



Front Air Flow

Ambient (surrounding environment) air is pulled in through the filters at the front of the spray booth, flows horizontally across the booth (cross Flow), and is exhausted up and out of the booth.

Because of the simple, "In-Door Filter" design of this spray paint booth, heating the incoming air CAN be done, it is usually cost prohibitive to do so.



Non Heated Only



Made in the USA

Great Finishes Start Here!

Engineered to a Higher Standard

Front Air Flow - Marathon Finishing Systems



Call Us Today at **310 791-5601** for a Quote & More Information

Great Finishes Start Here!

Marathon
Finishing Systems

Front Air Flow Standard Model Sizes

We offer a wide array of standard model sizes. Take a look at the chart below and see if what you need is here. If it's not, don't worry! We can either modify an existing standard size model to suit your requirements, or we can custom design a solution to fit your exact requirements and facility. We make what you need... exactly what you need. Every time.

Sales Model #	Design	Inside Dimensions	Outside Dimensions	Intake Plenum	Exhaust Plenum	Exhaust Fan/Motor	Lights	Main Door	Personnel Door
FF-101408-2L	Flat Top	9'8" w x 11'0" wd x 8'0" t	10' w x 13' 10" d x 8' 2" t	none	30" Box plenum	24"/3hp	2	6' w x 7' t	0
FF-101808-3L	Flat Top	9'8" w x 15'0" wd x 8'0" t	10' w x 17' 10" d x 8' 2" t	none	30" Box plenum	24"/3hp	3	6' w x 7' t	0
FF-121508-4L	Flat Top	11'8" w x 11'6" wd x 8'0" t	12' 0" w x 14' 10" d x 8' 2" t	none	36" Box plenum	30"/2hp	4	8' w x 7' t	1
FF-121808-4L	Flat Top	11'8" w x 15'0" wd x 8'0" t	12' 0" w x 18' 4" d x 8' 2" t	none	36" Box plenum	30"/2hp	4	8' w x 7' t	1
FF-142409-10L	Gable	14'0" w x 22'6" wd x 9'0" t	14' 4" w x 23' 10" d x 9' 2" t	none	12" Center Plenum	30"/3hp	10	9' w x 9' t	1
FF-142709-12L	Gable	14'0" w x 25'6" wd x 9'0" t	14' 4" w x 26' 10" d x 9' 2" t	none	12" Center Plenum	30"/3hp	12	9' w x 9' t	1
FF-143009-14L	Gable	14'0" w x 28'6" wd x 9'0" t	14' 4" w x 29' 10" d x 9' 2" t	none	12" Center Plenum	30"/3hp	14	9' w x 9' t	1
FF-163012-14L	Gable	16'0" w x 28'6" wd x 12'0" t	17' w x 30' 10" d x 12' 6" t	none	24" Center Plenum	42"/5hp	14	12' w x 12' t	1
FF-163016-18L	Gable	16'0" w x 28'6" wd x 16'0" t	17' w x 30' 10" d x 16' 6" t	none	24" Center Plenum	42"/7.5hp	18	12' w x 16' t	1
FF-163516-18L	Gable	16'0" w x 33'0" wd x 16'0" t	17' w x 35' 4" d x 16' 6" t	none	24" Center Plenum	42"/7.5hp	18	12' w x 16' t	1
FF-164016-24L	Gable	16'0" w x 38'0" wd x 16'0" t	17' w x 40' 4" d x 16' 6" t	none	24" Center Plenum	42"/7.5hp	24	12' w x 16' t	2
FF-164516-24L	Gable	16'0" w x 43'0" wd x 16'0" t	17' w x 45' 4" d x 16' 6" t	none	24" Center Plenum	42"/7.5hp	24	12' w x 16' t	2
FF-165016-30L	Gable	16'0" w x 48'0" wd x 16'0" t	17' w x 50' 4" d x 16' 6" t	none	24" Center Plenum	42"/7.5hp	30	12' w x 16' t	2
FF-165516-30L	Gable	16'0" w x 53'0" wd x 16'0" t	17' w x 55' 4" d x 16' 6" t	none	24" Center Plenum	42"/7.5hp	30	12' w x 16' t	2
FF-166016-36L	Gable	16'0" w x 58'0" wd x 16'0" t	17' w x 60' 4" d x 16' 6" t	none	24" Center Plenum	42"/7.5hp	36	12' w x 16' t	3
FF-184018-32L	Gable	18'0" w x 38'0" wd x 18'0" t	19 w x 39' 10" d x 18' 6" t	none	18" Center Plenum	(2) 36"/5hp	32	12' w x 18' t	3
FF-184518-32L	Gable	18'0" w x 43'0" wd x 18'0" t	19 w x 44' 10" d x 18' 6" t	none	18" Center Plenum	(2) 36"/5hp	32	12' w x 18' t	3
FF-185018-40L	Gable	18'0" w x 48'0" wd x 18'0" t	19 w x 49' 10" d x 18' 6" t	none	18" Center Plenum	(2) 36"/5hp	40	12' w x 18' t	3
FF-185518-40L	Gable	18'0" w x 53'0" wd x 18'0" t	19 w x 54' 10" d x 18' 6" t	none	18" Center Plenum	(2) 36"/5hp	40	12' w x 18' t	3
FF-186018-48L	Gable	18'0" w x 58'0" wd x 18'0" t	19 w x 59' 10" d x 18' 6" t	none	18" Center Plenum	(2) 36"/5hp	48	12' w x 18' t	3
FF-204020-32L	Gable	20'0" w x 38'0" wd x 20'0" t	21' w x 40' 4" d x 20' 6" t	none	24" Center Plenum	(2) 42"/5hp	32	14' w x 20' t	4
FF-204520-32L	Gable	20'0" w x 43'0" wd x 20'0" t	21' w x 45' 4" d x 20' 6" t	none	24" Center Plenum	(2) 42"/5hp	32	14' w x 20' t	4
FF-205020-40L	Gable	20'0" w x 48'0" wd x 20'0" t	21' w x 50' 4" d x 20' 6" t	none	24" Center Plenum	(2) 42"/5hp	40	14' w x 20' t	4
FF-205520-40L	Gable	20'0" w x 53'0" wd x 20'0" t	21' w x 55' 4" d x 20' 6" t	none	24" Center Plenum	(2) 42"/5hp	40	14' w x 20' t	4
FF-206020-48L	Gable	20'0" w x 58'0" wd x 20'0" t	21' w x 60' 4" d x 20' 6" t	none	24" Center Plenum	(2) 42"/5hp	48	14' w x 20' t	4

The **ETL Listing** (certification) is confirmation that every aspect of our construction methods and materials meet or exceed the build and safety code standards that have been established by NFPA 33. This is important, as your Fire Inspector will require proof of compliance before approval. Be ready for final approval, without last minute surprises or costly delays. All of our spray paint booths are ETL Certified.



Call Us Today at **310 791-5601** for a Quote & More Information

Great Finishes Start Here!

We Make What You Need. **Marathon**
Finishing Systems

Available Options & Upgrades



Powder Coating

Clean, beautiful, Bright White Powder Coating. Inside and outside, the entire booth!



LED Lighting Fixtures

We offer many different styles and types of lighting fixtures to choose from for your paint booth.



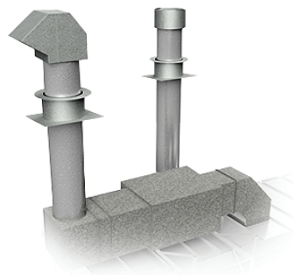
Paint Mixing Rooms

Don't forget a paint mixing room. An important addition to your painting operation.



Additional Filters

Don't get caught off guard! Make sure you have enough filters on hand by ordering extra filters.



Ducting Options

Whether it's a short run, or an entire facility air flow system, we have what you need.



Booth Coat

You've invested a lot of money on your spray paint booth, so you should protect it. Clear or White.

Call 310 791-5601 for Additional Information About These Options

Marathon
Finishing Systems