

## Benchmark Performance & Service

### Full Down Draft Spray Paint Booths

The Full Down Draft air flow type can be considered the "Gold Standard" of spray paint booths. Many professional painters insist on this air flow type, and most others prefer it.

With a dedicated pit or "basement" to streamline the air flow, and help gravity capture and expell airborne particulates and over spray, it has the best air flow of any other type of booth.

For the best spray painting experience and the utimate finish quality, you can't go wrong with a Full Down Draft booth.

**Heated Full Down Draft  
Spray Paint Booth  
with Roll Up Doors**



**Heated Full Down Draft Spray  
Paint Booth with Quad Doors**



### Great Finishes Start Here!



**Marathon Spray Paint Booths  
are ETL Listed for Your Safety!**

**Made to Last, Built to RUN!**

# Full Down Draft Features & Components



## Intake Filters

Quality Intake filter media is one of the critical components in maintaining a "clean room" type of dust free environment. Marathon Finishing provides high quality filter media with dust lock technology for a dust free finish every time.



## Fans/Motors

Our fans and motors are US made and AMCA certified, with spark resistant aluminum fan blades, high efficiency motors, and belt driven tubeaxial fans. The streamlined belt tunnel ventilates the drive compartment with air from outside the fan housing.



## Exhaust Filters

Our spray booths use only "Industry Standard" sized filters. Easily replaceable from any filter supplier, online, or from Marathon directly. Marathon provides high efficiency fiberglass paint arrester pads included with purchase.



## Lighting

Marathon takes great care when determining all aspects of illumination (location, orientation, etc.) for all of our spray booths, so you get the best lighting possible in your work space, with UL listed LED fixtures and one year warranty.



## Doors

Our large main doors are single skin construction, which reduces weight. This minimizes long term maintenance issues that may arise. Our smaller (3x7) personnel doors are dual skin, but do not experience problems due to weight.



## Construction

All of our paint booths are made using 18 gauge galvanized steel precision pre punched on center every 6" on 2" companion flanges. All of our spray paint booths are **ETL Listed** to ensure we build to the highest and SAFEST quality standards!



Call Us Today at **310 791-5601**  
for a Quote & More Information



## Did You Know?

The **ETL Listing** (certification) is confirmation that every aspect of our construction meets or exceeds the build and safety code standards established by NFPA 33. This is important, as your Fire Inspector will require proof of compliance before approval.

# Made to Exceed Your Expectations

All of Marathon's spray paint booths are manufactured using 18 gauge galvanized steel panels and precision cut using CNC equipment.

Our booths are assembled using nut & bolt construction with precision CNC punched holes every 6" on center of 2" companion flanges, resulting in a rugged structure that is built to meet or exceed NFPA and OSHA safety code requirements.

All of our LED light fixtures are UL listed for use in their respective applications. Lights been properly distributed throughout the work environment to provide optimal lighting, minimize shadow casting, and create a well lit & safe work environment.

All of our spray paint booths are designed to provide a superior experience with simple operation and easy maintenance, using components that are easily sourced and easy to replace.

Marathon Finishing will design, build, and install your spray paint booth to your exact specifications, to fit your needs, and your available space. Custom does not mean more expensive. All of our paint booths are manufactured at our facility in Temecula, CA. We only use components from trusted US manufacturers that deliver performance, quality, and safety.

Every day.

Call Us Today at **310 791-5601**  
for a Quote & More Information

Marathon Spray Paint Booths  
are ETL Listed for Your Safety!



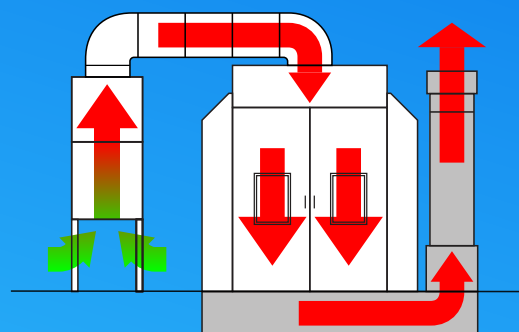
**Marathon**  
Finishing Systems



## Full Down Draft Air Flow

### Intake, Heated Booth:

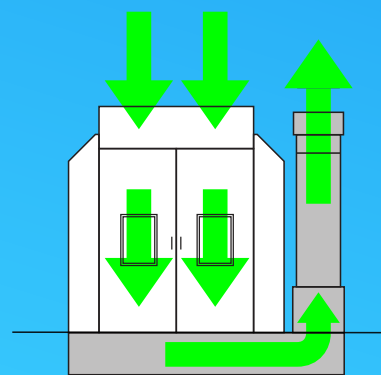
Outside air is filtered twice, once as it enters in through the air make up unit located next to the spray booth, and again as it passes through the intake plenum ceiling filters. In this example this booth is equipped with a Spray & Cure heating unit.



### Full Down Draft Heated

### Intake, Non Heated Booth:

The outside air is filtered once, through the ceiling intake filters before entering the work area.



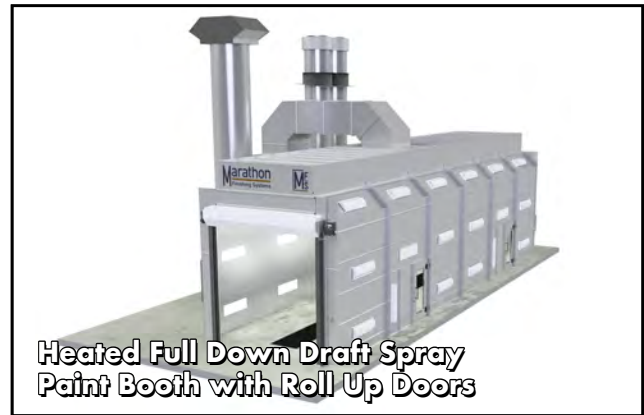
### Full Down Draft Non-Heated

### Exhaust:

The filtered air travels vertically downward to the bottom of the booth (down draft). Finally, the air is filtered of overspray and particulates by the exhaust filters before exiting the booth. Marathon uses standard size intake and exhaust filter media, readily available from most paint and refinishing suppliers, or directly from Marathon.

# Engineered to a Higher Standard

## Full Down Draft - Marathon Finishing Systems



### Full Down Draft - Single Wall Galvanized

Sales Model #	Design	Inside Dimensions	Outside Dimensions	Intake Plenum	Exhaust Plenum	Exhaust Fan/Motor	Lights	Main Door	Personnel Door
DD14249SN01	Gable	14'0" w x 24' wd x 9'0" t	14'4" w x 24'4" d x 9'2" t	Pressure	Center Row Pit	36"/5hp	14	9' w x 9' t	1
DD14279SN01	Gable	14'0" w x 27' wd x 9'0" t	14'4" w x 27'4" d x 9'2" t	Pressure	Center Row Pit	36"/5hp	16	9' w x 9' t	1
DD14309SN01	Gable	14'0" w x 30' wd x 9'0" t	14'4" w x 30'4" d x 9'2" t	Pressure	Center Row Pit	36"/5hp	16	9' w x 9' t	1
FD-163012	Gable	16'0" w x 30' wd x 12'0" t	17' w x 30'4" d x 12'6" t	Pressure	Center Row Pit	42"/7.5hp	16	12' w x 10' t	1

\*\*GRATING INCLUDED\*\*

### Full Down Draft - Double Wall Powder Coated

Sales Model #	Design	Inside Dimensions	Outside Dimensions	Intake Plenum	Exhaust Plenum	Exhaust Fan/Motor	Lights	Main Door	Personnel Door
FD-142409	Gable	14'0" w x 24' wd x 9'0" t	14'4" w x 24'4" d x 9'2" t	Pressure	Center Row Pit	36"/5hp	14	9' w x 9' t	1
FD-142709	Gable	14'0" w x 27' wd x 9'0" t	14'4" w x 27'4" d x 9'2" t	Pressure	Center Row Pit	36"/5hp	16	9' w x 9' t	1
FD-143009	Gable	14'0" w x 30' wd x 9'0" t	14'4" w x 30'4" d x 9'2" t	Pressure	Center Row Pit	36"/5hp	16	9' w x 9' t	1
FD-163012	Gable	16'0" w x 30' wd x 12'0" t	17' w x 30'4" d x 12'6" t	Pressure	Center Row Pit	42"/7.5hp	16	12' w x 10' t	1

\*\*GRATING INCLUDED\*\*

Call Us Today at **310 791-5601** for a Quote & More Information

**Great Finishes Start Here!**

**Marathon**  
Finishing Systems

# Available Options & Upgrades



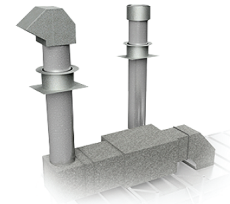
## Powder Coating

Clean, beautiful, Bright White Powder Coating. Inside and outside, the entire booth!



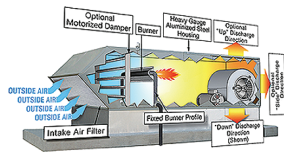
## Drive/Pass Thru Doors

Streamline your production loop. Integrates with existing automated production lines.



## Ducting Options

Whether it's a short run, or an entire facility air flow system, we have what you need.



## Spray & Cure Heat

Add a heating system to increase finish quality and decrease your turn around times.



## LED Lighting Fixtures

We offer many different styles and types of lighting fixtures to choose from for your paint booth.



## Booth Coat

You've invested a lot of money on your spray paint booth, so you should protect it. Clear or White.



## Additional Filters

Don't get caught off guard! Make sure you have enough filters on hand by ordering extra filters.



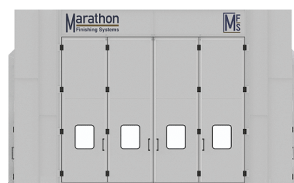
## Paint Mixing Rooms

Don't forget a paint mixing room. An important addition to your painting operation.



## Booth Coat

You've invested a lot of money on your spray paint booth, so you should protect it. Clear or White.



## Bi-Fold (Quad) Doors

4 doors (2 left, 2 right) that open out from center. 2" tube frame, single skin, with windows.



## Roll-Up Doors

Standard roll-up door with hard vinyl slats. Available in many colors and configurations.



## RollSeal Roll-Up Doors

A non-rigid alternative to a standard roll-up door. Available in many colors and types.

Call 310 791-5601 for Additional Information About These Options

**Marathon**  
Finishing Systems