

Benchmark Performance & Service

Industrial Open Face Spray Paint Booths

The Industrial Open Face spray paint booths are perhaps one of the most popular booth types, largely due to it's simple design and easy operation. Marathon will modify our standard models to conform to your specific production requirements. Specialized configurations, including (but not limited to) crane slots, pass-through (for conveyor systems), custom filtration options, specialized facility modifications, integration into pre-existing or third party automated environments, and so much more!



**Industrial Open Face Spray Paint Booth
with curtain (not shown for clarity)**

Call us at **(310) 791-5601** now to discuss your needs today!



Great Finishes Start Here!



Marathon Spray Paint Booths
are ETL Listed for Your Safety!

Industrial Open Face Spray Paint Booth

Made to Last, Built to RUN!

Industrial Open Face Features & Components



Exhaust Filters

Our spray booths use only "Industry Standard" sized filters. Easily replaceable from any filter supplier, online, or from Marathon directly. Marathon provides high efficiency fiberglass paint arrestor pads included with purchase.



Fans/Motors

Our fans and motors are US made and AMCA certified, with spark resistant aluminum fan blades, high efficiency motors, and belt driven tubeaxial fans. The streamlined belt tunnel ventilates the drive compartment with air from outside the fan housing.



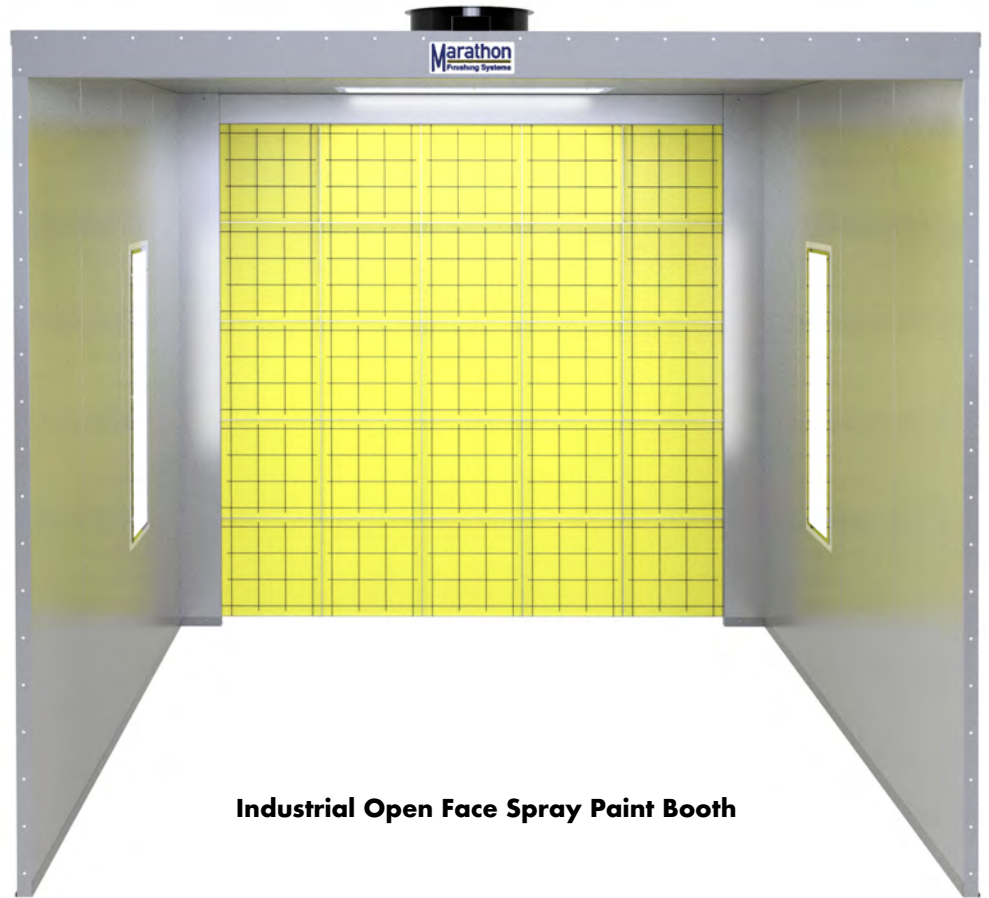
Lighting

Marathon takes great care when determining all aspects of illumination (location, orientation, etc.) for all of our spray booths, so you get the best lighting possible in your work space, with UL listed LED fixtures and one year warranty.



Construction

All of our paint booths are made using 18 gauge galvanized steel precision pre punched on center every 6" on 2" companion flanges. All of our spray paint booths are **ETL Listed** to ensure we build to the highest and SAFEST quality standards!



Industrial Open Face Spray Paint Booth

Call Us Today at **310 791-5601**
for a Quote & More Information

Did You Know?

The **ETL Listing** (certification) is confirmation that every aspect of our construction meets or exceeds the build and safety code standards established by NFPA 33. This is important, as your Fire Inspector will require proof of compliance before approval.



Made to Exceed Your Expectations

All of Marathon's spray paint booths are manufactured using 18 gauge galvanized steel panels and precision cut using CNC equipment.

Our booths are assembled using nut & bolt construction with precision CNC punched holes every 6" on center of 2" companion flanges, resulting in a rugged structure that is built to meet or exceed NFPA and OSHA safety code requirements.

All of our LED light fixtures are UL listed for use in their respective applications. Lights been properly distributed throughout the work environment to provide optimal lighting, minimize shadow casting, and create a well lit & safe work environment.

All of our spray paint booths are designed to provide a superior experience with simple operation and easy maintenance, using components that are easily sourced and easy to replace.

Marathon Finishing will design, build, and install your spray paint booth to your exact specifications, to fit your needs, and your available space. Custom does not mean more expensive. All of our paint booths are manufactured at our facility in Temecula, CA. We only use components from trusted US manufacturers that deliver performance, quality, and safety.

Every day.

Marathon Spray Paint Booths
are ETL Listed for Your Safety!



Call Us Today at **310 791-5601**
for a Quote & More Information

Marathon
Finishing Systems

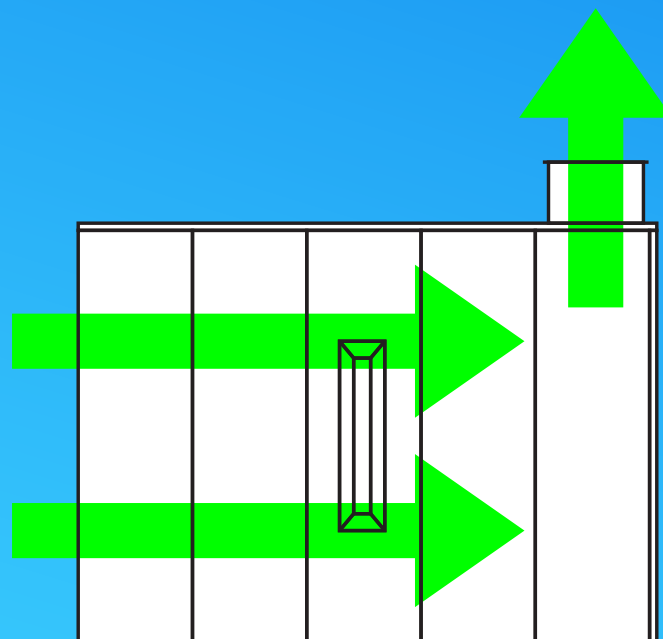


Industrial Open Face Air Flow

Ambient (surrounding environment) air is pulled into the front of the spray booth, flows horizontally across the booth (cross flow), and is exhausted up and out of the booth.

Because of the simple, "Open Face" design of this spray paint booth:

- Keeping your shop as dust free as possible to minimize airborne particulates from entering the booth's air stream.
- While heating the incoming air CAN be done, it is usually cost prohibitive to do so.



Non Heated Only

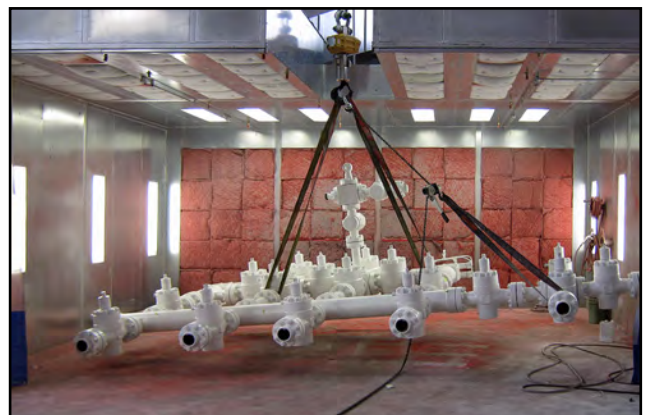


Made in the USA

Great Finishes Start Here!

Engineered to a Higher Standard

Industrial Open Face - Marathon Finishing Systems



Call Us Today at **310 791-5601** for a Quote & More Information

Great Finishes Start Here!

Marathon
Finishing Systems

Industrial Open Face Standard Model Sizes

We offer a wide array of standard model sizes. Take a look at the chart below and see if what you need is here. If it's not, don't worry! We can either modify an existing standard size model to suit your requirements, or we can custom design a solution to fit your exact requirements and facility. We make what you need... exactly what you need. Every time.

Sales Model #	Inside Dimensions	Outside Dimensions	Intake Plenum	Exhaust Plenum	Exhaust Fan/Motor	Lights
OF-080708-1L Flat Top	7'8"w x 4'6"wd x 8'0"t	8'w x 7' 2" d x 8' 2"	none	30" plenum	24"/2hp	1
OF-081108-1L Flat Top	7'8"w x 8'6"wd x 8'0"t	8'w x 11' 2" d x 8' 2"	none	30" plenum	24"/2hp	1
OF-100708-1L Flat Top	9'8"w x 4'6"wd x 8'0"t	10'w x 7' 2" d x 8' 2"	none	30" plenum	24"/3hp	1
OF-101108-1L Flat Top	9'8"w x 8'6"wd x 8'0"t	10'w x 11' 2" d x 8' 2"	none	30" plenum	24"/3hp	1
OF-121208-2L Flat Top	11'8"w x 8'6"wd x 8'0"t	12'w x 11' 8" d x 8' 2"	none	36" plenum	30"/2hp	2
OF-121210-2L Flat Top	11'8"w x 8'6"wd x 10'0"t	12'w x 11' 8" d x 10' 2"	none	36" plenum	30"/3hp	2
OF-121212-2L Flat Top	11'8"w x 8'6"wd x 12'0"t	12'w x 11' 8" d x 12' 2"	none	36" plenum	30"/5hp	2
OF141208-2L Flat Top	14'0"w x 8'6"wd x 8'0"t	15'w x 11' 8" d x 8' 6"	none	36" plenum	30"/3hp	2
OF141210-2L Flat Top	14'0"w x 8'6"wd x 10'0"t	15'w x 11' 8" d x 10' 6"	none	36" plenum	30"/5hp	2
OF-141212-2L Flat Top	14'0"w x 8'6"wd x 12'0"t	15'w x 12' 2" d x 12' 6"	none	42" plenum	36"/5hp	2
OF-161208-3L Flat Top	16'0"w x 8'6"wd x 8'0"t	17'w x 11' 8" d x 8' 6"	none	36" plenum	30"/5hp	3
OF-161210-3L Flat Top	16'0"w x 8'6"wd x 10'0"t	17'w x 12' 2" d x 10' 6"	none	42" plenum	36"/5hp	3
OF-161212-3L Flat Top	16'0"w x 8'6"wd x 12'0"t	17'w x 12' 8" d x 12' 6"	none	48" plenum	42"/5hp	3
OF-201310-4L Flat Top	20'0"w x 8'6"wd x 10'0"t	21'w x 12' 8" d x 10' 6"	none	48" plenum	42"/5hp	4
OF-201312-4L Flat Top	20'0"w x 8'6"wd x 12'0"t	21'w x 12' 8" d x 12' 6"	none	48" plenum	42"/7.5hp	4
OF-201910-8L Flat Top	20'0"w x 14'6"wd x 10'0"t	21'w x 18' 8" d x 10' 6"	none	48" plenum	42"/5hp	8
OF-201912-8L Flat Top	20'0"w x 14'6"wd x 12'0"t	21'w x 18' 8" d x 12' 6"	none	48" plenum	42"/7.5hp	8

The **ETL Listing** (certification) is confirmation that every aspect of our construction methods and materials meet or exceed the build and safety code standards that have been established by NFPA 33. This is important, as your Fire Inspector will require proof of compliance before approval. Be ready for final approval, without last minute surprises or costly delays. All of our spray paint booths are ETL Certified.



Call Us Today at **310 791-5601** for a Quote & More Information

Great Finishes Start Here!

We Make What You Need. **Marathon**
Finishing Systems

Available Options & Upgrades



Powder Coating

Clean, beautiful, Bright White Powder Coating. Inside and outside, the entire booth!



LED Lighting Fixtures

We offer many different styles and types of lighting fixtures to choose from for your paint booth.



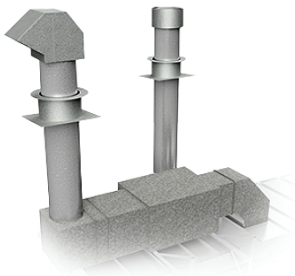
Paint Mixing Rooms

Don't forget a paint mixing room. An important addition to your painting operation.



Additional Filters

Don't get caught off guard! Make sure you have enough filters on hand by ordering extra filters.



Ducting Options

Whether it's a short run, or an entire facility air flow system, we have what you need.



Booth Coat

You've invested a lot of money on your spray paint booth, so you should protect it. Clear or White.

Call 310 791-5601 for Additional Information About These Options

Marathon
Finishing Systems