

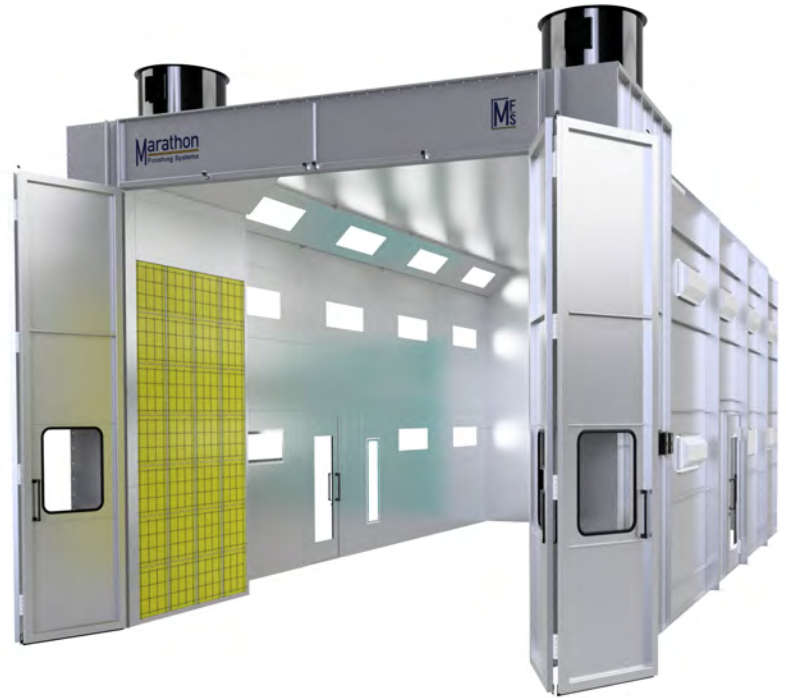
Benchmark Performance & Service

Reverse Air Flow Spray Paint Booths

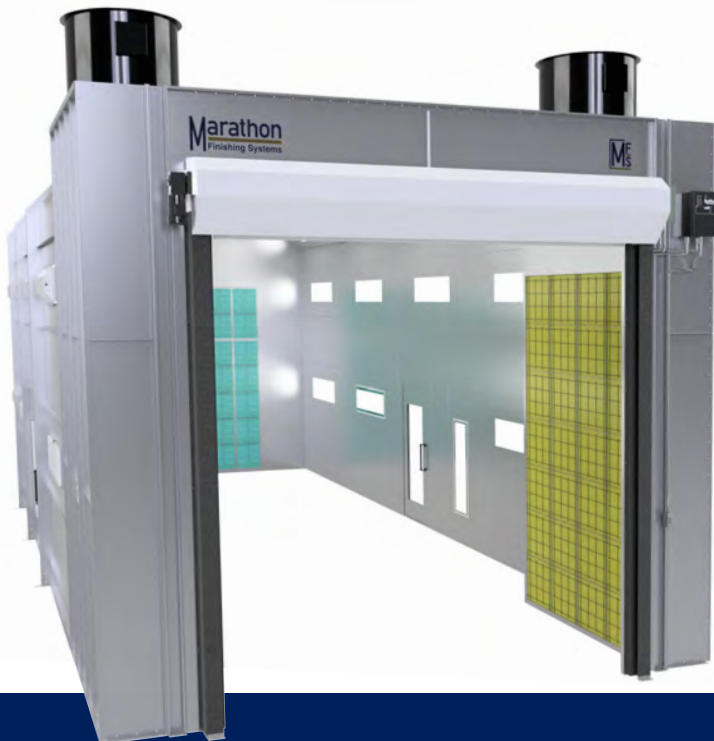
The Reverse Air Flow spray booth is a great all around solution for automotive, truck, large equipment and industrial applications. A clean and strong air flow that delivers outstanding results. This booth style can have a heat/cure air make up unit added.

We have a wide array of standard sizes and configurations and customization available. If you don't see what you need, just us your requirements and we'll make it.

Check out the other reasons to buy from Marathon Finishing Systems.



**Non Heated Reverse Air Flow Spray
Paint Booth with Quad Doors**



Great Finishes Start Here!



Marathon Spray Paint Booths
are ETL Listed for Your Safety!

**Non Heated Reverse Air Flow Spray
Paint Booth with Roll Up Doors**

Reverse Air Flow Features & Components



Intake Filters

Quality Intake filter media is one of the critical components in maintaining a "clean room" type of dust free environment. Marathon Finishing provides high quality filter media with dust lock technology for a dust free finish every time.



Fans/Motors

Our fans and motors are US made and AMCA certified, with spark resistant aluminum fan blades, high efficiency motors, and belt driven tubeaxial fans. The streamlined belt tunnel ventilates the drive compartment with air from outside the fan housing.



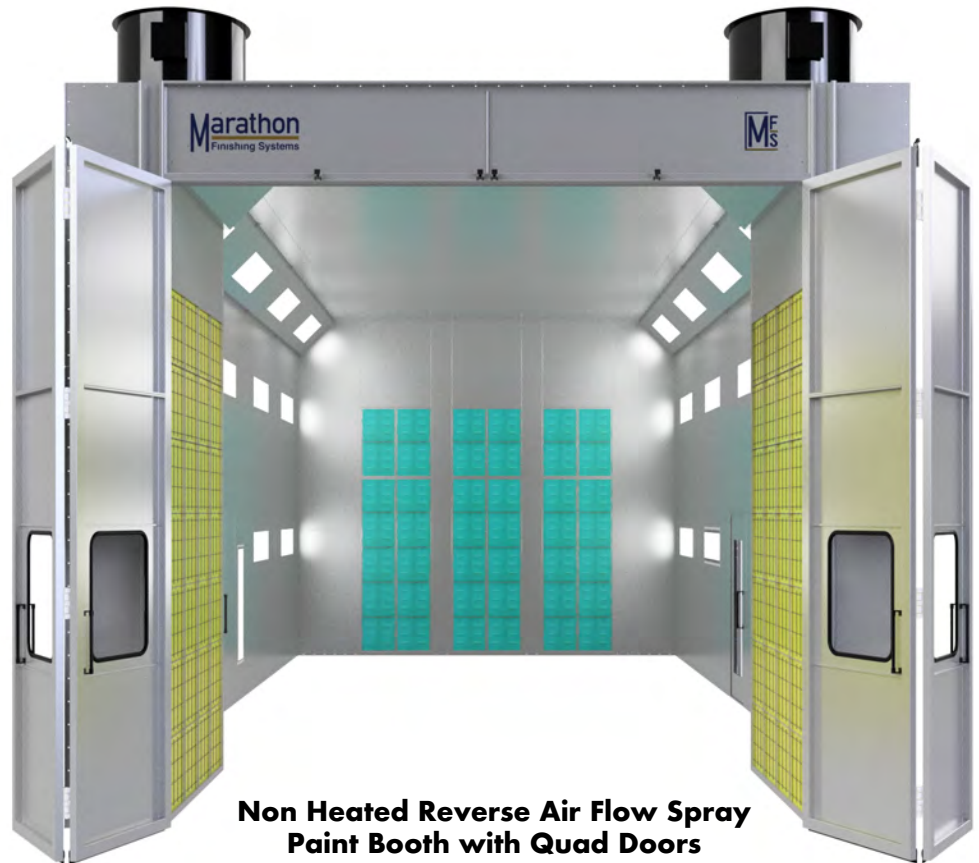
Exhaust Filters

Our spray booths use only "Industry Standard" sized filters. Easily replaceable from any filter supplier, online, or from Marathon directly. Marathon provides high efficiency fiberglass paint arrestor pads included with purchase.



Lighting

Marathon takes great care when determining all aspects of illumination (location, orientation, etc.) for all of our spray booths, so you get the best lighting possible in your work space, with UL listed LED fixtures and one year warranty.



**Non Heated Reverse Air Flow Spray
Paint Booth with Quad Doors**



Doors

Our large main doors are single skin construction, which reduces weight. This minimizes long term maintenance issues that may arise. Our smaller (3x7) personnel doors are dual skin, but do not experience problems due to weight.



Construction

All of our paint booths are made using 18 gauge galvanized steel precision pre punched on center every 6" on 2" companion flanges. All of our spray paint booths are **ETL Listed** to ensure we build to the highest and SAFEST quality standards!

Call Us Today at **310 791-5601**
for a Quote & More Information



Did You Know?

The **ETL Listing** (certification) is confirmation that every aspect of our construction meets or exceeds the build and safety code standards established by NFPA 33. This is important, as your Fire Inspector will require proof of compliance before approval.

Made to Exceed Your Expectations

All of Marathon's spray paint booths are manufactured using 18 gauge galvanized steel panels, precision cut using CNC equipment.

Our booths are assembled using nut & bolt construction, precision CNC punched every 6" on center of 2" companion flanges, resulting in a rugged structure, that is built to meet or exceed NFPA and OSHA safety requirements.

All of our LED light fixtures are UL listed for their respective applications, and properly distributed throughout the work environment to provide optimal lighting with minimum shadow casting, for a well lit, safe work environment.

All of our spray booths are designed to provide a superior experience, simple operation, and easy maintenance using components that are easily sourced and easy to replace.

Marathon Finishing will design, build, and install a spray paint booth to your exact specifications, to fit your needs, and your available space. Custom does NOT mean more expensive! All of our spray paint booths are manufactured at our facility in Temecula, CA, and are equipped with components from trusted US manufacturers that deliver quality and safety.

Every day.

Marathon Spray Paint Booths
are ETL Listed for Your Safety!



Call Us Today at **310 791-5601**
for a Quote & More Information

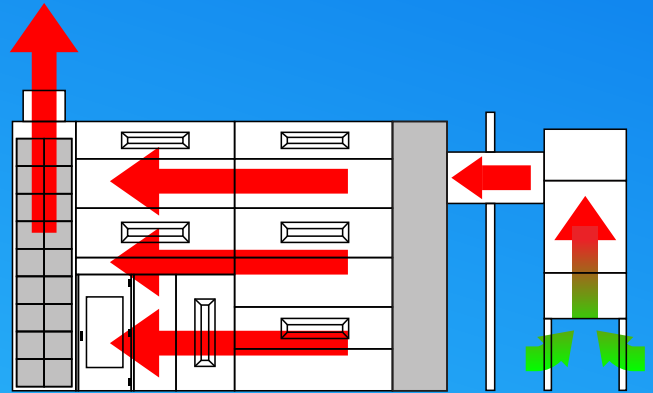
Marathon
Finishing Systems



Reverse Air Flow

Intake, Heated Booth:

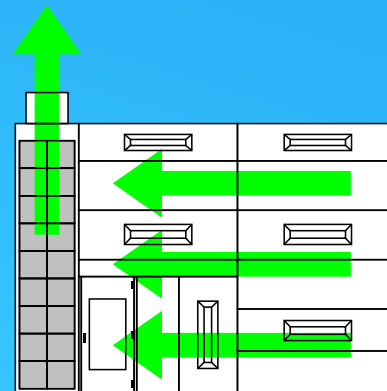
Outside air is filtered twice, once as it enters in through the air make up unit (heater), and again as it passes through the rear intake plenum filter wall. In this example this booth is equipped with a Spray & Cure heating unit.



Heated Reverse Air Flow

Intake, Non Heated Booth:

The outside air is filtered once, through the rear intake plenum filters before entering the work area.



Non Heated Reverse Air Flow

Exhaust:

The filtered air travels horizontally towards the front of the booth (cross flow). Finally, the air is filtered of overspray and particulates by the exhaust filters before exiting the booth. Marathon uses standard size intake and exhaust filter media, readily available from most paint and refinishing suppliers.

Engineered to a Higher Standard

Reverse Air Flow - Marathon Finishing Systems



We offer a wide array of standard model sizes. Take a look at the chart below and see if what you need is here. If it's not, don't worry! We can either modify an existing standard size model to suit your needs, or we can custom design a solution to fit your exact requirements and facility. We make what you need... exactly what you need. Every time.

Sales Model #	Design	Inside Dimensions	Outside Dimensions	Intake Plenum	Exhaust Plenum	Exhaust Fan/Motor	Lights	Main Door	Personnel Door
RF-142409-10L	Gable	14'0" w x 24' wd x 9'0" t	14'4" w x 24' 4" d x 11'2" t	none	Corner Tower/Bridge	30"/3hp	10	9' w x 9' t	1
RF-142709-10L	Gable	14'0" w x 27' wd x 9'0" t	14'4" w x 27' 4" d x 11'2" t	none	Corner Tower/Bridge	30"/3hp	10	9' w x 9' t	1
RF-143009-12L	Gable	14'0" w x 30' wd x 9'0" t	14'4" w x 30' 4" d x 11'2" t	none	Corner Tower/Bridge	30"/3hp	12	9' w x 9' t	1
RF-163012-18L	Gable	16'0" w x 30' wd x 12'0" t	17' w x 30' 4" d x 14'2" t	none	Corner Tower/Bridge	42"/5hp	18	12' w x 12' t	1
RF-163016-18L	Gable	16'0" w x 30'0" wd x 16'0" t	17' w x 30' 4" d x 18'2" t	none	Corner Tower/Bridge	42"/7.5hp	18	12' w x 16' t	1
RF-163516-18L	Gable	16'0" w x 35'0" wd x 16'0" t	17' w x 35' 4" d x 18'2" t	none	Corner Tower/Bridge	42"/7.5hp	18	12' w x 16' t	1
RF-164016-24L	Gable	16'0" w x 40'0" wd x 16'0" t	17' w x 40' 4" d x 18'2" t	none	Corner Tower/Bridge	42"/7.5hp	24	12' w x 16' t	2
RF-164516-24L	Gable	16'0" w x 45'0" wd x 16'0" t	17' w x 45' 4" d x 18'2" t	none	Corner Tower/Bridge	42"/7.5hp	24	12' w x 16' t	2
RF-165016-30L	Gable	16'0" w x 50'0" wd x 16'0" t	17' w x 50' 4" d x 18'2" t	none	Corner Tower/Bridge	42"/7.5hp	30	12' w x 16' t	2
RF-165516-30L	Gable	16'0" w x 55'0" wd x 16'0" t	17' w x 55' 4" d x 18'2" t	none	Corner Tower/Bridge	42"/7.5hp	30	12' w x 16' t	2
RF-166016-36L	Gable	16'0" w x 60'0" wd x 16'0" t	17' w x 60' 4" d x 18'2" t	none	Corner Tower/Bridge	42"/7.5hp	36	12' w x 16' t	3
RF-184018-32L	Gable	18'0" w x 40'0" wd x 18'0" t	19' w x 40' 4" d x 18'6" t	none	Corner Tower	(2) 36"/5hp	32	12' w x 18' t	2
RF-184518-32L	Gable	18'0" w x 45'0" wd x 18'0" t	19' w x 45' 4" d x 18'6" t	none	Corner Tower	(2) 36"/5hp	32	12' w x 18' t	2
RF-185018-40L	Gable	18'0" w x 50'0" wd x 18'0" t	19' w x 50' 4" d x 18'6" t	none	Corner Tower	(2) 36"/5hp	40	12' w x 18' t	2
RF-185518-40L	Gable	18'0" w x 55'0" wd x 18'0" t	19' w x 55' 4" d x 18'6" t	none	Corner Tower	(2) 36"/5hp	40	12' w x 18' t	3
RF-186018-48L	Gable	18'0" w x 60'0" wd x 18'0" t	19' w x 60' 4" d x 18'6" t	none	Corner Tower	(2) 36"/5hp	48	12' w x 18' t	3
RF-204020-32L	Gable	20'0" w x 40'0" wd x 20'0" t	21' w x 40' 4" d x 20'6" t	none	Corner Tower	(2) 42"/5hp	32	14' w x 20' t	2
RF-204520-32L	Gable	20'0" w x 45'0" wd x 20'0" t	21' w x 45' 4" d x 20'6" t	none	Corner Tower	(2) 42"/5hp	32	14' w x 20' t	3
RF-205020-40L	Gable	20'0" w x 50'0" wd x 20'0" t	21' w x 50' 4" d x 20'6" t	none	Corner Tower	(2) 42"/5hp	40	14' w x 20' t	4
RF-205520-40L	Gable	20'0" w x 55'0" wd x 20'0" t	21' w x 55' 4" d x 20'6" t	none	Corner Tower	(2) 42"/5hp	40	14' w x 20' t	4
RF-206020-48L	Gable	20'0" w x 60'0" wd x 20'0" t	21' w x 60' 4" d x 20'6" t	none	Corner Tower	(2) 42"/5hp	48	14' w x 20' t	4

Call Us Today at **310 791-5601** for a Quote & More Information

Great Finishes Start Here!

Marathon
Finishing Systems

Available Options & Upgrades



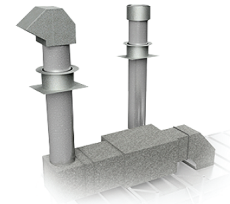
Powder Coating

Clean, beautiful, Bright White Powder Coating. Inside and outside, the entire booth!



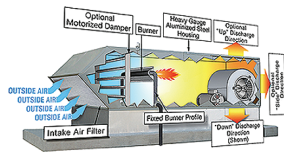
Drive/Pass Thru Doors

Streamline your production loop. Integrates with existing automated production lines.



Ducting Options

Whether it's a short run, or an entire facility air flow system, we have what you need.



Spray & Cure Heat

Add a heating system to increase finish quality and decrease your turn around times.



LED Lighting Fixtures

We offer many different styles and types of lighting fixtures to choose from for your paint booth.



Booth Coat

You've invested a lot of money on your spray paint booth, so you should protect it. Clear or White.



Additional Filters

Don't get caught off guard! Make sure you have enough filters on hand by ordering extra filters.



Paint Mixing Rooms

Don't forget a paint mixing room. An important addition to your painting operation.



Booth Coat

You've invested a lot of money on your spray paint booth, so you should protect it. Clear or White.



Bi-Fold (Quad) Doors

4 doors (2 left, 2 right) that open out from center. 2" tube frame, single skin, with windows.



Roll-Up Doors

Standard roll-up door with hard vinyl slats. Available in many colors and configurations.



RollSeal Roll-Up Doors

A non-rigid alternative to a standard roll-up door. Available in many colors and types.

Call 310 791-5601 for Additional Information About These Options

Marathon
Finishing Systems