

Benchmark Performance & Service

Side Down Draft Spray Paint Booths

The Side Down Draft spray booth is the lower cost down draft alternative for automotive, truck, large equipment and industrial applications. Unlike the Full Down Draft spray booth, this booth does not require a rather expensive "PIT" installed underneath to serve as an exhaust plenum.

The air flow is still a down draft booth (considered by many experts to be THE superior air flow type), so you get all of the benefits without the higher cost.

Check out the other reasons to buy from Marathon Finishing Systems.



**Non Heated Side Down Draft Spray
Paint Booth with Quad Doors**

Great Finishes Start Here!



**Marathon Spray Paint Booths
are ETL Listed for Your Safety!**

**Heated Side Down Draft Spray
Paint Booth with Quad Doors**



Side Down Draft Features & Components



Intake Filters

Quality Intake filter media is one of the critical components in maintaining a "clean room" type of dust free environment. Marathon Finishing provides high quality filter media with dust lock technology for a dust free finish every time.



Fans/Motors

Our fans and motors are US made and AMCA certified, with spark resistant aluminum fan blades, high efficiency motors, and belt driven tubeaxial fans. The streamlined belt tunnel ventilates the drive compartment with air from outside the fan housing.



Exhaust Filters

Our spray booths use only "Industry Standard" sized filters. Easily replaceable from any filter supplier, online, or from Marathon directly. Marathon provides high efficiency fiberglass paint arrester pads included with purchase.



Lighting

Marathon takes great care when determining all aspects of illumination (location, orientation, etc.) for all of our spray booths, so you get the best lighting possible in your work space, with UL listed LED fixtures and one year warranty.



Non Heated Side Down Draft Spray Paint Booth with Quad Doors



Doors

Our large main doors are single skin construction, which reduces weight. This minimizes long term maintenance issues that may arise. Our smaller (3x7) personnel doors are dual skin, but do not experience problems due to weight.



Construction

All of our paint booths are made using 18 gauge galvanized steel precision pre punched on center every 6" on 2" companion flanges. All of our spray paint booths are **ETL Listed** to ensure we build to the highest and SAFEST quality standards!

Call Us Today at **310 791-5601**
for a Quote & More Information



Did You Know?

The **ETL Listing** (certification) is confirmation that every aspect of our construction meets or exceeds the build and safety code standards established by NFPA 33. This is important, as your Fire Inspector will require proof of compliance before approval.

Made to Exceed Your Expectations

All of Marathon's spray paint booths are manufactured using 18 gauge galvanized steel panels and precision cut using CNC equipment.

Our booths are assembled using nut & bolt construction with precision CNC punched holes every 6" on center of 2" companion flanges, resulting in a rugged structure that is built to meet or exceed NFPA and OSHA safety code requirements.

All of our LED light fixtures are UL listed for use in their respective applications. Lights been properly distributed throughout the work environment to provide optimal lighting, minimize shadow casting, and create a well lit & safe work environment.

All of our spray paint booths are designed to provide a superior experience with simple operation and easy maintenance, using components that are easily sourced and easy to replace.

Marathon Finishing will design, build, and install your spray paint booth to your exact specifications, to fit your needs, and your available space. Custom does not mean more expensive. All of our paint booths are manufactured at our facility in Temecula, CA. We only use components from trusted US manufacturers that deliver performance, quality, and safety.

Every day.

Marathon Spray Paint Booths
are ETL Listed for Your Safety!



Call Us Today at **310 791-5601**
for a Quote & More Information

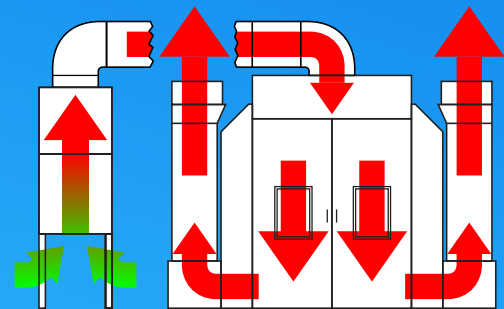
Marathon
Finishing Systems



Side Down Draft Air Flow

Intake, Heated Booth:

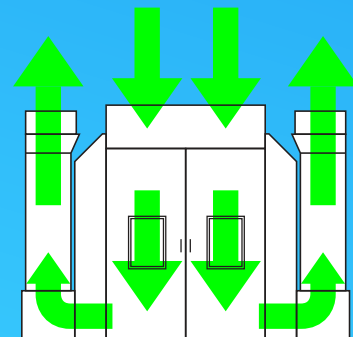
Outside air is filtered twice, once as it enters in through the air make up unit located next to the spray booth, and again as it passes through the intake plenum ceiling filters. In this example this booth is equipped with a Spray & Cure heating unit.



Heated Side Down Draft

Intake, Non Heated Booth:

The outside air is filtered once, through the ceiling intake filters before entering the work area.



Non Heated Side Down Draft

Exhaust:

The filtered air travels vertically downward to the bottom of the booth (down draft). Finally, the air is filtered of overspray and particulates by the exhaust filters before exiting the booth. Marathon uses standard size intake and exhaust filter media, available from most paint and refinishing suppliers, or directly from Marathon.

Engineered to a Higher Standard

Side Down Draft - Marathon Finishing Systems



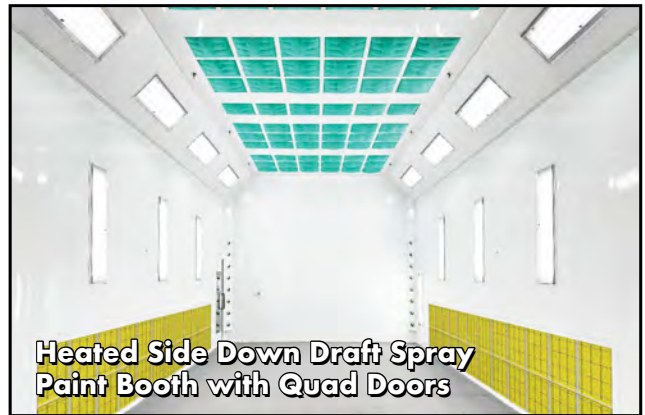
Non Heated Side Down Draft Spray Paint Booth with Quad Doors



Non Heated Side Down Draft Spray Paint Booth with Quad Doors



Heated Drive Through Side Down Draft Spray Paint Booth with Quad Doors



Heated Side Down Draft Spray Paint Booth with Quad Doors



Heated Drive Through Side Down Draft Spray Paint Booth with Quad Doors



Heated Drive Through Side Down Draft Spray Paint Booth with Quad Doors

Call Us Today at **310 791-5601** for a Quote & More Information

Great Finishes Start Here!

Marathon
Finishing Systems

Side Down Draft Standard Model Sizes

We offer a wide array of standard model sizes. Take a look at the chart below and see if what you need is here. If it's not, don't worry! We can either modify an existing standard size model to suit your needs, or we can custom design a solution to fit your exact requirements and facility. We make what you need... exactly what you need. Every time.

Sales Model #	Design	Inside Dimensions	Outside Dimensions	Intake Plenum	Exhaust Plenum	Exhaust Fan/Motor	# of Lights	Main Door	Personnel Door
SD-142409-10L	Gable	14'0" w x 24' wd x 9'0" t	18'4" w x 24'4" d x 11'6" t	Heated	2 Side Plenums	(2) 24"/3hp	10	9'w x 9't	1
SD-142409-10L	Gable	14'0" w x 24' wd x 9'0" t	18'4" w x 24'4" d x 9'2" t	none	2 Side Plenums	(2) 24"/2hp	10	9'w x 9't	1
SD-142709-10L	Gable	14'0" w x 27' wd x 9'0" t	18'4" w x 27'4" d x 11'6" t	Heated	2 Side Plenums	(2) 24"/3hp	10	9'w x 9't	1
SD-142709-10L	Gable	14'0" w x 27' wd x 9'0" t	18'4" w x 27'4" d x 9'2" t	none	2 Side Plenums	(2) 24"/2hp	10	9'w x 9't	1
SD-143009-12L	Gable	14'0" w x 30' wd x 9'0" t	18'4" w x 30'4" d x 11'6" t	Heated	2 Side Plenums	(2) 24"/3hp	12	9'w x 9't	1
SD-143009-12L	Gable	14'0" w x 30' wd x 9'0" t	18'4" w x 30'4" d x 9'2" t	none	2 Side Plenums	(2) 24"/2hp	12	9'w x 9't	1
SD-163012-18L	Gable	16'0" w x 30' wd x 12'0" t	20'4" w x 30'4" d x 15" t	Heated	2 Side Plenums	(2) 30"/5hp	18	12'w x 10't	1
SD-163012-18L	Gable	16'0" w x 30' wd x 12'0" t	20'4" w x 30'4" d x 12'6" t	none	2 Side Plenums	(2) 30"/3hp	18	12'w x 10't	1
SD-163016-18L	Gable	16'0" w x 30' wd x 16'0" t	20'4" w x 30'4" d x 19" t	Heated	2 Side Plenums	(2) 30"/3hp	18	12'w x 14't	1
SD-163016-18L	Gable	16'0" w x 30' wd x 16'0" t	20'4" w x 30'4" d x 16'6" t	none	2 Side Plenums	(2) 30"/3hp	18	12'w x 14't	1
SD-163516-18L	Gable	16'0" w x 35' wd x 16'0" t	20'4" w x 35'4" d x 19" t	Heated	2 Side Plenums	(2) 30"/5hp	18	12'w x 14't	1
SD-163516-18L	Gable	16'0" w x 35' wd x 16'0" t	20'4" w x 35'4" d x 16'6" t	none	2 Side Plenums	(2) 30"/5hp	18	12'w x 14't	1
SD-164016-24L-P	Gable	16'0" w x 40' wd x 16'0" t	20'4" w x 40'4" d x 19" t	Heated	4 Side Plenums	(4) 24"/3hp	24	12'w x 14't	2
SD-164016-24L	Gable	16'0" w x 40' wd x 16'0" t	20'4" w x 40'4" d x 16'6" t	none	4 Side Plenums	(4) 24"/2hp	24	12'w x 14't	2
SD-164516-24L	Gable	16'0" w x 45'0" wd x 16'0" t	20'4" w x 45'4" d x 19" t	Heated	4 Side Plenums	(4) 24"/3hp	24	12'w x 14't	2
SD-164516-24L	Gable	16'0" w x 45'0" wd x 16'0" t	20'4" w x 45'4" d x 16'6" t	none	4 Side Plenums	(4) 24"/2hp	24	12'w x 14't	2
SD-165016-30L	Gable	16'0" w x 50'0" wd x 16'0" t	20'4" w x 50'4" d x 19'6" t	Heated	4 Side Plenums	(4) 30"/5hp	30	12'w x 14't	2
SD-165016-30L	Gable	16'0" w x 50'0" wd x 16'0" t	20'4" w x 50'4" d x 16'6" t	none	4 Side Plenums	(4) 30"/3hp	30	12'w x 14't	2
SD-165519-30L	Gable	16'0" w x 55'0" wd x 16'0" t	20'4" w x 55'4" d x 19'6" t	Heated	4 Side Plenums	(4) 30"/5hp	30	12'w x 14't	2
SD-165519-30L	Gable	16'0" w x 55'0" wd x 16'0" t	20'4" w x 55'4" d x 16'6" t	none	4 Side Plenums	(4) 30"/3hp	30	12'w x 14't	2
SD-166016-36L	Gable	16'0" w x 60'0" wd x 16'0" t	20'4" w x 60'4" d x 19'6" t	Heated	4 Side Plenums	(4) 30"/5hp	36	12'w x 14't	3
SD-166016-36L	Gable	16'0" w x 60'0" wd x 16'0" t	20'4" w x 60'4" d x 16'6" t	none	4 Side Plenums	(4) 30"/3hp	36	12'w x 14't	3
SD-184018-32L	Gable	18'0" w x 40'0" wd x 18'0" t	22'4" w x 40'4" d x 18'6" t	Heated	4 Side Plenums	(4) 30"/2hp	32	12'w x 14't	2
SD-184018-32L	Gable	18'0" w x 40'0" wd x 18'0" t	22'4" w x 40'4" d x 18'6" t	none	4 Side Plenums	(4) 24"/3hp	32	12'w x 14't	2
SD-184518-32L	Gable	18'0" w x 45'0" wd x 18'0" t	22'4" w x 45'4" d x 18'6" t	Heated	4 Side Plenums	(4) 30"/2hp	32	12'w x 14't	2
SD-184518-32L	Gable	18'0" w x 45'0" wd x 18'0" t	22'4" w x 45'4" d x 18'6" t	none	4 Side Plenums	(4) 24"/3hp	32	12'w x 14't	2
SD-185018-40L	Gable	18'0" w x 50'0" wd x 18'0" t	22'4" w x 50'4" d x 18'6" t	Heated	4 Side Plenums	(4) 30"/5hp	40	12'w x 14't	2
SD-185018-40L	Gable	18'0" w x 50'0" wd x 18'0" t	22'4" w x 50'4" d x 18'6" t	none	4 Side Plenums	(4) 30"/3hp	40	12'w x 14't	2
SD-185518-40L	Gable	18'0" w x 55'0" wd x 18'0" t	22'4" w x 55'4" d x 18'6" t	Heated	4 Side Plenums	(4) 30"/5hp	40	12'w x 14't	3
SD-185518-40L	Gable	18'0" w x 55'0" wd x 18'0" t	22'4" w x 55'4" d x 18'6" t	none	4 Side Plenums	(4) 30"/3hp	40	12'w x 14't	3
SD-186018-48L	Gable	18'0" w x 60'0" wd x 18'0" t	22'4" w x 60'4" d x 18'6" t	Heated	4 Side Plenums	(4) 30"/5hp	48	12'w x 14't	3
SD-186018-48L	Gable	18'0" w x 60'0" wd x 18'0" t	22'4" w x 60'4" d x 18'6" t	none	4 Side Plenums	(4) 30"/5hp	48	12'w x 14't	3
SD-204020-32L	Gable	20'0" w x 40'0" wd x 20'0" t	24'4" w x 40'4" d x 20'6" t	Heated	4 Side Plenums	(4) 30"/3hp	32	14'w x 14't	2
SD-204020-32L	Gable	20'0" w x 40'0" wd x 20'0" t	24'4" w x 40'4" d x 20'6" t	none	4 Side Plenums	(4) 30"/3hp	32	14'w x 14't	2
SD-204520-32L	Gable	20'0" w x 45'0" wd x 20'0" t	24'4" w x 45'4" d x 20'6" t	Heated	4 Side Plenums	(4) 30"/3hp	32	14'w x 14't	3
SD-204520-32L	Gable	20'0" w x 45'0" wd x 20'0" t	24'4" w x 45'4" d x 20'6" t	none	4 Side Plenums	(4) 30"/3hp	32	14'w x 14't	3
SD-205020-40L	Gable	20'0" w x 50'0" wd x 20'0" t	24'4" w x 50'4" d x 20'6" t	Heated	4 Side Plenums	(4) 30"/3hp	40	14'w x 14't	4
SD-205020-40L	Gable	20'0" w x 50'0" wd x 20'0" t	24'4" w x 50'4" d x 20'6" t	none	4 Side Plenums	(4) 30"/3hp	40	14'w x 14't	4
SD-205520-40L	Gable	20'0" w x 55'0" wd x 20'0" t	24'4" w x 55'4" d x 20'6" t	Heated	4 Side Plenums	(4) 30"/5hp	40	14'w x 14't	4
SD-205520-40L	Gable	20'0" w x 55'0" wd x 20'0" t	24'4" w x 55'4" d x 20'6" t	none	4 Side Plenums	(4) 30"/5hp	40	14'w x 14't	4
SD-206020-48L-P	Gable	20'0" w x 60'0" wd x 20'0" t	24'4" w x 60'4" d x 20'6" t	Heated	4 Side Plenums	(4) 36"/5hp	48	14'w x 14't	4
SD-206020-48L	Gable	20'0" w x 60'0" wd x 20'0" t	24'4" w x 60'4" d x 20'6" t	none	4 Side Plenums	(4) 36"/5hp	48	14'w x 14't	4

The **ETL Listing** (certification) is confirmation that every aspect of our construction methods and materials meet or exceed the build and safety code standards that have been established by NFPA 33. This is important, as your Fire Inspector will require proof of compliance before approval. Be ready for final approval, without last minute surprises or costly delays. All of our spray paint booths are ETL Certified.



Call Us Today at **310 791-5601** for a Quote & More Information

We Make What You Need. **Marathon**
Finishing Systems

Available Options & Upgrades



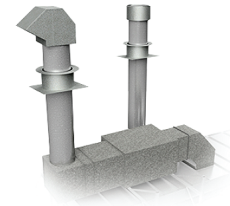
Powder Coating

Clean, beautiful, Bright White Powder Coating. Inside and outside, the entire booth!



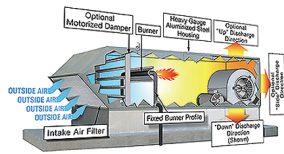
Drive/Pass Thru Doors

Streamline your production loop. Integrates with existing automated production lines.



Ducting Options

Whether it's a short run, or an entire facility air flow system, we have what you need.



Spray & Cure Heat

Add a heating system to increase finish quality and decrease your turn around times.



LED Lighting Fixtures

We offer many different styles and types of lighting fixtures to choose from for your paint booth.



Booth Coat

You've invested a lot of money on your spray paint booth, so you should protect it. Clear or White.



Additional Filters

Don't get caught off guard! Make sure you have enough filters on hand by ordering extra filters.



Paint Mixing Rooms

Don't forget a paint mixing room. An important addition to your painting operation.



Booth Coat

You've invested a lot of money on your spray paint booth, so you should protect it. Clear or White.



Bi-Fold (Quad) Doors

4 doors (2 left, 2 right) that open out from center. 2" tube frame, single skin, with windows.



Roll-Up Doors

Standard roll-up door with hard vinyl slats. Available in many colors and configurations.



RollSeal Roll-Up Doors

A non-rigid alternative to a standard roll-up door. Available in many colors and types.

Call 310 791-5601 for Additional Information About These Options

Marathon
Finishing Systems