

## Designed to Withstand the Elements

# Outdoor Rated Spray Paint Booths

### Benchmark Performance

An Outdoor Rated spray paint booth is not simply an indoor booth placed outside. They are engineered from the ground up to withstand the weather, so you can continue your spray painting operations without interruption.

Our Outdoor Rated booths are structurally reinforced with steel support beams, an integrated steel canopy, and NEMA 3R rated electrical components. Ruggedly built to stand up to nature, and keep you working.



**Heated Side Down Draft Spray  
Paint Booth with Quad Doors**



**Non Heated Side Down Draft Spray  
Paint Booth with Roll-Up Doors**

## Great Finishes Start Here!



Marathon Spray Paint Booths  
are ETL Listed for Your Safety!

# Made to Last, Built to RUN!

# Outdoor Rated Booths Features & Components



## Intake Filters

Quality Intake filter media is one of the critical components in maintaining a "clean room" type of dust free environment. Marathon Finishing provides high quality filter media with dust lock technology for a dust free finish every time.



## Fans/Motors

Our fans and motors are US made and AMCA certified, with spark resistant aluminum fan blades, high efficiency motors, and belt driven tubeaxial fans. The streamlined belt tunnel ventilates the drive compartment with air from outside the fan housing.



## Exhaust Filters

Our spray booths use only "Industry Standard" sized filters. Easily replaceable from any filter supplier, online, or from Marathon directly. Marathon provides high efficiency fiberglass paint arrestor pads included with purchase.



## Lighting

Marathon takes great care when determining all aspects of illumination (location, orientation, etc.) for all of our spray booths, so you get the best lighting possible in your work space, with UL listed LED fixtures and one year warranty.



## Doors

Our large main doors are single skin construction, which reduces weight. This minimizes long term maintenance issues that may arise. Our smaller (3x7) personnel doors are dual skin, but do not experience problems due to weight.



## Construction

All of our paint booths are made using 18 gauge galvanized steel precision pre punched on center every 6" on 2" companion flanges. All of our spray paint booths are **ETL Listed** to ensure we build to the highest and SAFEST quality standards!



Heated Side Down Draft  
Spray Paint Booth  
with Quad Doors

Call Us Today at **310 791-5601**  
for a Quote & More Information



## Did You Know?

The **ETL Listing** (certification) is confirmation that every aspect of our construction meets or exceeds the build and safety code standards established by NFPA 33. This is important, as your Fire Inspector will require proof of compliance before approval.

# Made to Exceed Your Expectations

All of Marathon's Outdoor Rated spray paint booths are manufactured using 18 gauge galvanized steel panels and precision cut using CNC equipment.

Our booths are assembled using nut & bolt construction with precision CNC punched holes every 6" on center of 2" companion flanges, resulting in a rugged structure that is built to meet or exceed NFPA and OSHA safety code requirements.

All of our LED light fixtures are UL listed for use in their respective applications. Lights been properly distributed throughout the work environment to provide optimal lighting, minimize shadow casting, and create a well lit & safe work environment.

All of our spray paint booths are designed to provide a superior experience with simple operation and easy maintenance, using components that are easily sourced and easy to replace.

Marathon Finishing will design, build, and install your spray paint booth to your exact specifications, to fit your needs, and your available space. Custom does not mean more expensive. All of our paint booths are manufactured at our facility in Temecula, CA. We only use components from trusted US manufacturers that deliver performance, quality, and safety.

Every day.

Call Us Today at **310 791-5601**  
for a Quote & More Information

Marathon Products are ETL  
Listed for Your Safety!



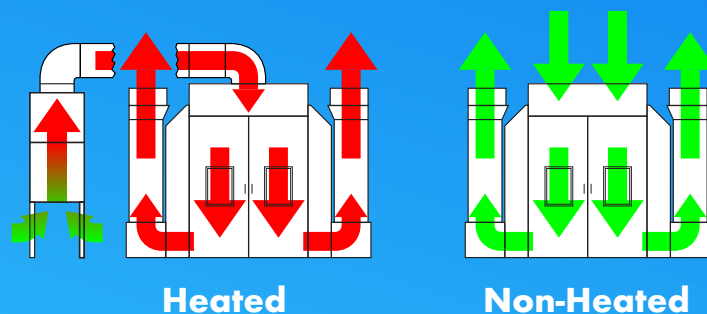
## Outdoor Rated Air Flow Types

Outdoor Rated booths can be configured as as:

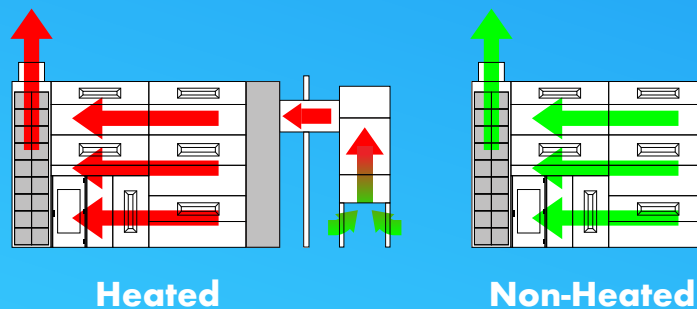
- Reverse Air Flow (RAF)
- Modified Down Draft (MDD)
- Full Down Draft (FDD)

They can be Heated or Non-Heated.

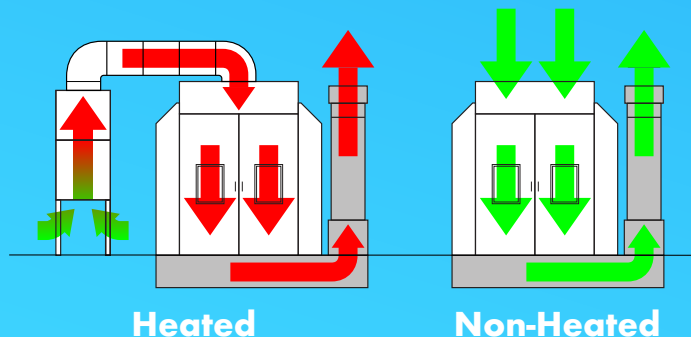
### Side Down Draft



### Reverse Air Flow



### Full Down Draft

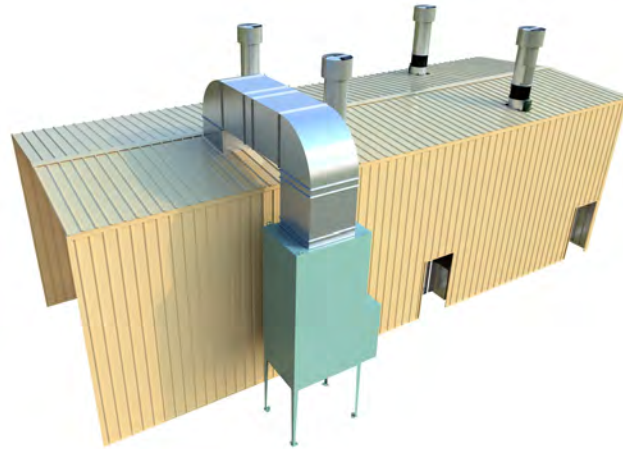


# Engineered to a Higher Standard

Exceptional Engineering Results in Exceptional Quality. Take a Look.

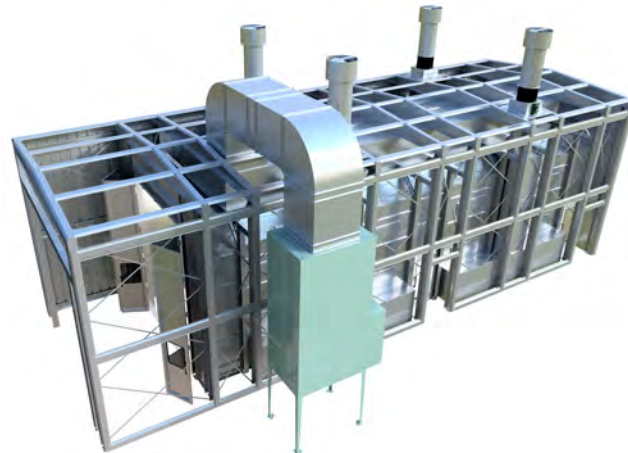
## Outer Shell

The outer protective housing is constructed using coated 26 gauge steel panels that provide exceptional weather protection year round, so that your spray painting operations can continue, even when nature wants you to take a break.



## Inner Structure

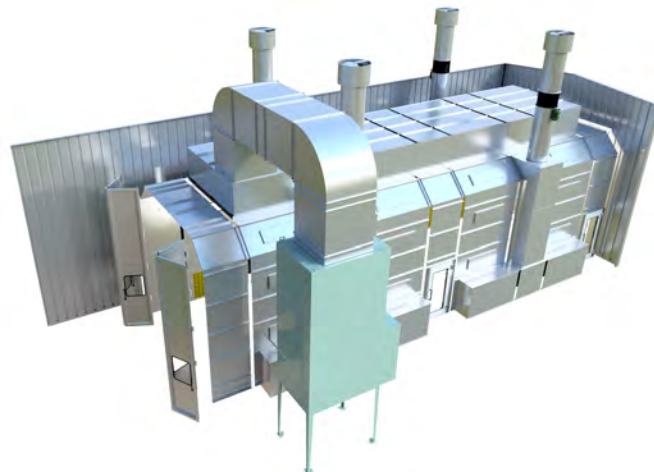
The inner steel structure is designed to support the outer housing, but is also integrated into the spray booth itself. This engineering approach strengthens both, creating a single rugged enclosure that is stronger than either by themselves.



## Work Zone

Nestled safely inside all of that is a high quality spray paint booth, designed to provide the absolute best environment for high volume and high quality finishing results that you can find. Filtered incoming air, and highly efficient exhaust air.

High quality finishing results are hard to achieve... we make it as easy as possible.



# Great Finishes Start Here!

©2024 Marathon Finishing Systems, Inc. • [www.MarathonSprayBooths.com](http://www.MarathonSprayBooths.com) • 310-791-5601 • [info@MarathonSprayBooths.com](mailto:info@MarathonSprayBooths.com)

**Marathon**  
Finishing Systems

# Available Options & Upgrades



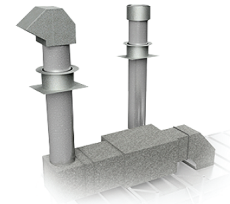
## Powder Coating

Clean, beautiful, Bright White Powder Coating. Inside and outside, the entire booth!



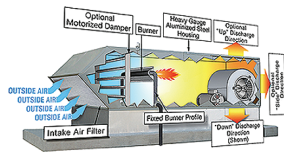
## Drive/Pass Thru Doors

Streamline your production loop. Integrates with existing automated production lines.



## Ducting Options

Whether it's a short run, or an entire facility air flow system, we have what you need.



## Spray & Cure Heat

Add a heating system to increase finish quality and decrease your turn around times.



## LED Lighting Fixtures

We offer many different styles and types of lighting fixtures to choose from for your paint booth.



## Booth Coat

You've invested a lot of money on your spray paint booth, so you should protect it. Clear or White.



## Additional Filters

Don't get caught off guard! Make sure you have enough filters on hand by ordering extra filters.



## Paint Mixing Rooms

Don't forget a paint mixing room. An important addition to your painting operation.



## Booth Coat

You've invested a lot of money on your spray paint booth, so you should protect it. Clear or White.



## Bi-Fold (Quad) Doors

4 doors (2 left, 2 right) that open out from center. 2" tube frame, single skin, with windows.



## Roll-Up Doors

Standard roll-up door with hard vinyl slats. Available in many colors and configurations.



## RollSeal Roll-Up Doors

A non-rigid alternative to a standard roll-up door. Available in many colors and types.

Call 310 791-5601 for Additional Information About These Options

**Marathon**  
Finishing Systems